

Phospho-PAK1(T212) Antibody
Affinity Purified Rabbit Polyclonal Antibody (Pab)
Catalog # AP3328a**Specification**

Phospho-PAK1(T212) Antibody - Product Information

Application	DB,E
Primary Accession	O13153
Other Accession	P35465 , O88643
Reactivity	Human
Predicted	Mouse, Rat
Host	Rabbit
Clonality	Polyclonal
Isotype	Rabbit IgG
Calculated MW	60647

Phospho-PAK1(T212) Antibody - Additional Information**Gene ID** 5058**Other Names**

Serine/threonine-protein kinase PAK 1, Alpha-PAK, p21-activated kinase 1, PAK-1, p65-PAK, PAK1

Target/Specificity

This PAK1 Antibody is generated from rabbits immunized with a KLH conjugated synthetic phosphopeptide corresponding to amino acid residues surrounding T212 of human PAK1.

Dilution

DB~~1:500

E~~Use at an assay dependent concentration.

Format

Purified polyclonal antibody supplied in PBS with 0.09% (W/V) sodium azide. This antibody is purified through a protein A column, followed by peptide affinity purification.

Storage

Maintain refrigerated at 2-8°C for up to 2 weeks. For long term storage store at -20°C in small aliquots to prevent freeze-thaw cycles.

Precautions

Phospho-PAK1(T212) Antibody is for research use only and not for use in diagnostic or therapeutic procedures.

Phospho-PAK1(T212) Antibody - Protein Information**Name** PAK1 {ECO:0000303|PubMed:8805275, ECO:0000312|HGNC:HGNC:8590}**Function** Protein kinase involved in intracellular signaling pathways downstream of integrins and

receptor-type kinases that plays an important role in cytoskeleton dynamics, in cell adhesion, migration, proliferation, apoptosis, mitosis, and in vesicle-mediated transport processes (PubMed:[10551809](#), PubMed:[11896197](#), PubMed:[12876277](#), PubMed:[14585966](#), PubMed:[15611088](#), PubMed:[17726028](#), PubMed:[17989089](#), PubMed:[30290153](#), PubMed:[17420447](#)). Can directly phosphorylate BAD and protects cells against apoptosis (By similarity). Activated by interaction with CDC42 and RAC1 (PubMed:[8805275](#), PubMed:[9528787](#)). Functions as a GTPase effector that links the Rho-related GTPases CDC42 and RAC1 to the JNK MAP kinase pathway (PubMed:[8805275](#), PubMed:[9528787](#)). Phosphorylates and activates MAP2K1, and thereby mediates activation of downstream MAP kinases (By similarity). Involved in the reorganization of the actin cytoskeleton, actin stress fibers and of focal adhesion complexes (PubMed:[9032240](#), PubMed:[9395435](#)). Phosphorylates the tubulin chaperone TBCB and thereby plays a role in the regulation of microtubule biogenesis and organization of the tubulin cytoskeleton (PubMed:[15831477](#)). Plays a role in the regulation of insulin secretion in response to elevated glucose levels (PubMed:[22669945](#)). Part of a ternary complex that contains PAK1, DVL1 and MUSK that is important for MUSK-dependent regulation of AChR clustering during the formation of the neuromuscular junction (NMJ) (By similarity). Activity is inhibited in cells undergoing apoptosis, potentially due to binding of CDC2L1 and CDC2L2 (PubMed:[12624090](#)). Phosphorylates MYL9/MLC2 (By similarity). Phosphorylates RAF1 at 'Ser-338' and 'Ser-339' resulting in: activation of RAF1, stimulation of RAF1 translocation to mitochondria, phosphorylation of BAD by RAF1, and RAF1 binding to BCL2 (PubMed:[11733498](#)). Phosphorylates SNAI1 at 'Ser-246' promoting its transcriptional repressor activity by increasing its accumulation in the nucleus (PubMed:[15833848](#)). In podocytes, promotes NR3C2 nuclear localization (By similarity). Required for atypical chemokine receptor ACKR2-induced phosphorylation of LIMK1 and cofilin (CFL1) and for the up-regulation of ACKR2 from endosomal compartment to cell membrane, increasing its efficiency in chemokine uptake and degradation (PubMed:[23633677](#)). In synapses, seems to mediate the regulation of F-actin cluster formation performed by SHANK3, maybe through CFL1 phosphorylation and inactivation (By similarity). Plays a role in RUFY3-mediated facilitating gastric cancer cells migration and invasion (PubMed:[25766321](#)). In response to DNA damage, phosphorylates MORC2 which activates its ATPase activity and facilitates chromatin remodeling (PubMed:[23260667](#)). In neurons, plays a crucial role in regulating GABA(A) receptor synaptic stability and hence GABAergic inhibitory synaptic transmission through its role in F-actin stabilization (By similarity). In hippocampal neurons, necessary for the formation of dendritic spines and excitatory synapses; this function is dependent on kinase activity and may be exerted by the regulation of actomyosin contractility through the phosphorylation of myosin II regulatory light chain (MLC) (By similarity). Along with GIT1, positively regulates microtubule nucleation during interphase (PubMed:[27012601](#)). Phosphorylates FXR1, promoting its localization to stress granules and activity (PubMed:[20417602](#)). Phosphorylates ILK on 'Thr-173' and 'Ser-246', promoting nuclear export of ILK (PubMed:[17420447](#)).

Cellular Location

Cytoplasm. Cell junction, focal adhesion. Cell projection, lamellipodium. Cell membrane. Cell projection, ruffle membrane. Cell projection, invadopodium. Nucleus, nucleoplasm. Chromosome. Cytoplasm, cytoskeleton, microtubule organizing center, centrosome Note=Colocalizes with RUFY3, F-actin and other core migration components in invadopodia at the cell periphery (PubMed:[25766321](#)) Recruited to the cell membrane by interaction with CDC42 and RAC1 Recruited to focal adhesions upon activation. Colocalized with CIB1 within membrane ruffles during cell spreading upon readhesion to fibronectin. Upon DNA damage, translocates to the nucleoplasm when phosphorylated at Thr-212 where is co-recruited with MORC2 on damaged chromatin (PubMed:[23260667](#)). Localization to the centrosome does not depend upon the presence of gamma-tubulin (PubMed:[27012601](#)) Localization of the active, but not inactive, protein to the adhesions and edge of lamellipodia is mediated by interaction with GIT1 (PubMed:[11896197](#)). {ECO:0000250|UniProtKB:P35465, ECO:0000269|PubMed:[11896197](#), ECO:0000269|PubMed:[23260667](#), ECO:0000269|PubMed:[25766321](#), ECO:0000269|PubMed:[27012601](#)}

Tissue Location

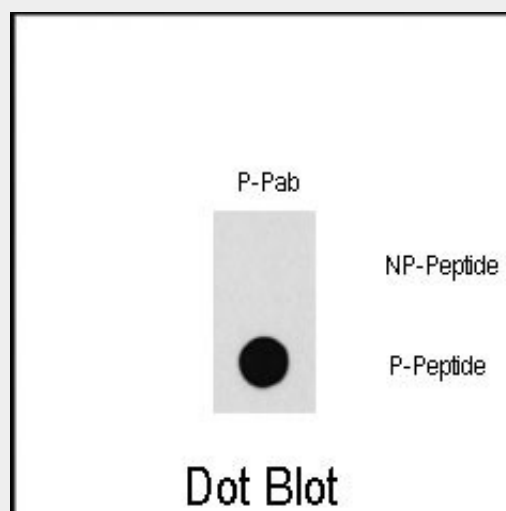
Overexpressed in gastric cancer cells and tissues (at protein level) (PubMed:[25766321](#)).

Phospho-PAK1(T212) Antibody - Protocols

Provided below are standard protocols that you may find useful for product applications.

- [Western Blot](#)
- [Blocking Peptides](#)
- [Dot Blot](#)
- [Immunohistochemistry](#)
- [Immunofluorescence](#)
- [Immunoprecipitation](#)
- [Flow Cytometry](#)
- [Cell Culture](#)

Phospho-PAK1(T212) Antibody - Images



Dot blot analysis of Phospho-PAK1-T212 Pab (Cat.AP3328a) on nitrocellulose membrane. 50ng of Phospho-peptide or Non Phospho-peptide per dot were adsorbed. Antibody working concentrations are 0.5ug per ml.

Phospho-PAK1(T212) Antibody - Background

PAK proteins are critical effectors that link RhoGTPases to cytoskeleton reorganization and nuclear signaling. PAK proteins, a family of serine/threonine p21-activating kinases, include PAK1, PAK2, PAK3 and PAK4. These proteins serve as targets for the small GTP binding proteins Cdc42 and Rac and have been implicated in a wide range of biological activities. PAK1 regulates cell motility and morphology.

Phospho-PAK1(T212) Antibody - References

Li, W., et al., J. Biol. Chem. 279(31):32824-32831 (2004).
DerMardirossian, C., et al., Mol. Cell 15(1):117-127 (2004).
Weber, D.S., et al., Circ. Res. 94(9):1219-1226 (2004).
Balasenthil, S., et al., J. Biol. Chem. 279(2):1422-1428 (2004).
Wu, R.F., et al., J. Virol. 78(2):779-789 (2004).